

# Hot Patch on Demand (HOTPOD)

## Contact Information Description

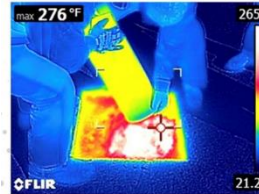
necoTech, LLC  
 70 S Sandusky Street Suite 210  
 Delaware, Ohio, USA, 43015

CEO: Steve Flaherty, Cell 740-972-1391

POC: Steve Flaherty  
 Founder & CEO  
[sflaherty@necotechusa.com](mailto:sflaherty@necotechusa.com)  
 Cell: 740-972-1391

## Capability Description

- Asphalt patch that lasts over 10X's longer than a conventional cold-mix asphalt (CMA) patch product without introducing any added risk for pavement repair.
- HOTPOD is equivalent to conventional hot-mix asphalt (HMA) without the downsides of needing large trucking equipment, time-sensitive application windows, or access to a batch facility.
- HOTPOD system can be used in all ambient temperatures, increasing both the geographic availability and ability to use year-round



## Description of HOTPOD

- Rapid sustainment asphalt patching solution
  - Can be rapidly heated to 300° F in under 5 minutes
  - Pre-packaged and stored in any location for on-demand use
- Nearly unlimited shelf like, unlike most products on market
- Does not need to “cure” like conventional cold mix products
- Can be designed like a conventional hot mix asphalt (e.g. binder grade, gradation, etc.)
- Not limited by ambient temperature or season like conventional hot mix asphalt
- Lasts much longer than conventional patch products

## Command Benefits

- CENTCOM/USINDOPACOM/EUCOM/AFRICOM
- In cold regions, HOTPOD increases the repair season 4x compared to HMA plants (12 mo. vs. 3 mo.).
- HOTPOD heating is 35x faster than conventional HMA heating methods (5 min vs. 3 hr).
- HOTPOD withstands over 800x the aircraft traffic than that of conventional cold patch (5,000+ passes vs. 6 passes [F-15E]).
- Eliminates requirement of “out of fence” maintenance materials or personnel
- Lowers cost of pavement repair due to being a “fix it once” solution with no repeat repairs needed once in place.